

# Derwentwater Independent Hostel Hazards in the grounds

Magnetic North



## a) Vehicles

- 1) Access to road needs great care - blind corner
- 2) Road - busy narrow roads border the grounds
- 3) Driveway - cars, coaches and delivery lorries
- 4) Delivery lorries reversing into courtyard
- 5) Car parks - vehicles manoeuvring

## b) Water hazards all marked in blue

- 1) Stream & waterfall - unfenced above waterfall. Fast flowing - do not enter
- 2) Drainage ditches and other streams marked in blue - fast running water in spate. Do not enter


## c) Cliffs, Rocks - marked on map. Walls & Fences

Please ensure all children are instructed not to climb any rocks, walls or fences.

## d) Trees, bushes and woodpile

Please ensure all children are instructed not to climb trees. Warn that there are many brambles, nettles etc. Please keep away from the woodpile (d1) area.

## e) Private areas

Hash  marked areas are private

## f) Steps and paths

the steps by the waterfall are extremely slippery, rough, uneven with high steps.

Take great care and supervise children. Steep ground in vicinity of waterfall. All paths can be muddy slippery and rough.

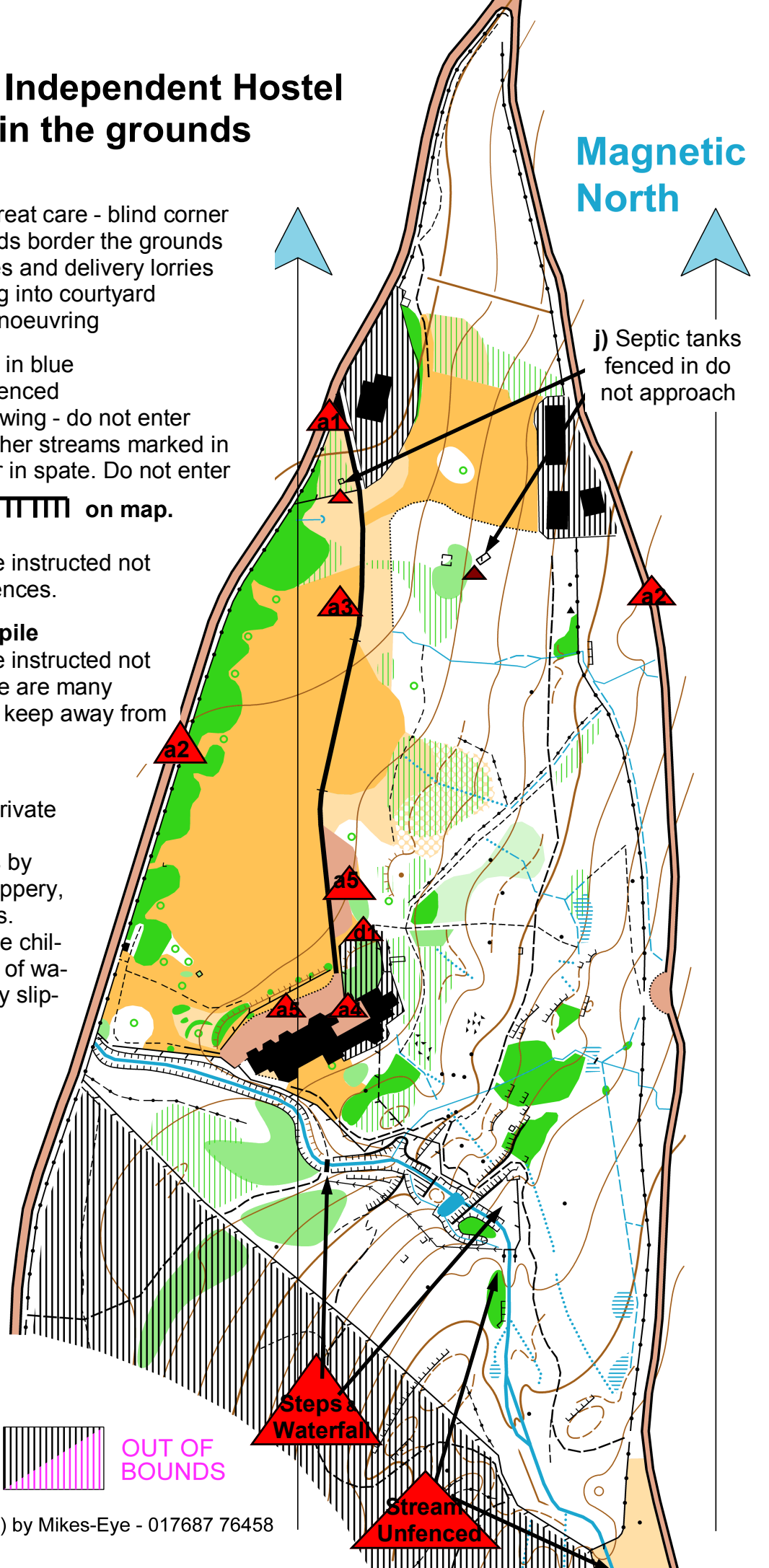
## g) Games area - bumpy and uneven.

Easy to trip when running. Ensure goals are secured to the ground and ensure goals and other outdoor equipment are used as intended only.

## h) Fires and BBQ - no unauthorised fires or BBQs.

## i) High winds - avoid walking near trees in high wind due to danger of falling branches

## j) Septic tanks fenced in do not approach



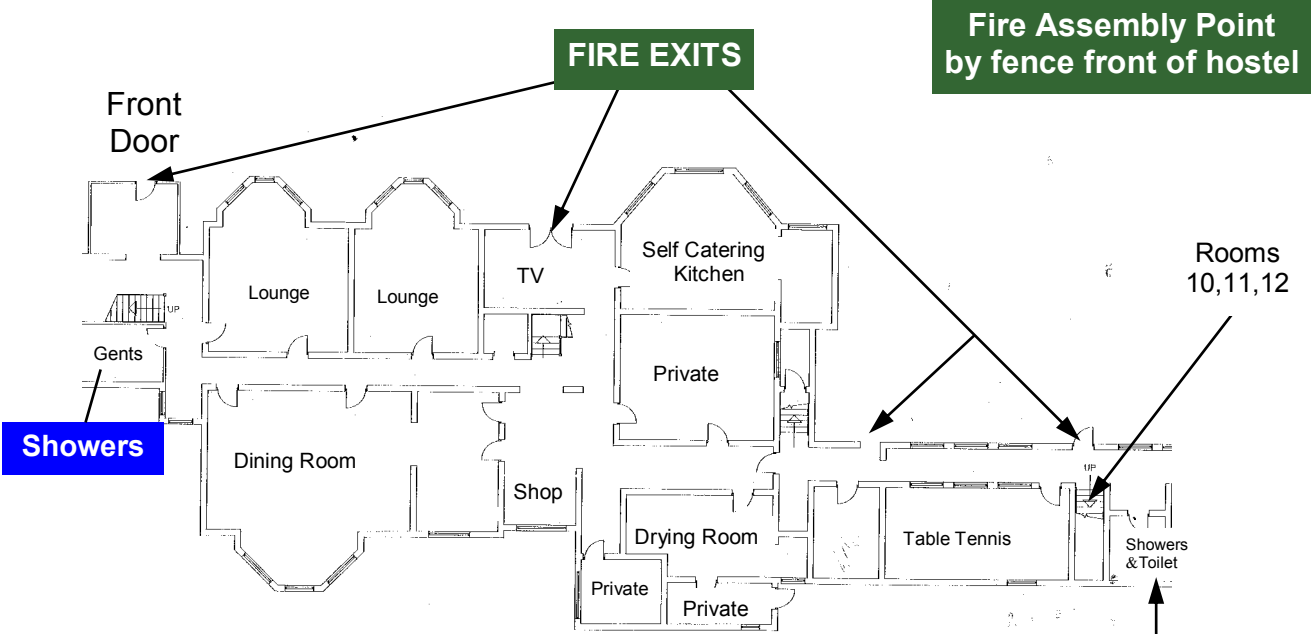
Please could your group help us and the environment. Please point out the recycling bins, ask them to turn off bedside, room and toilet lights. Many thanks.

**Please turn off lights**

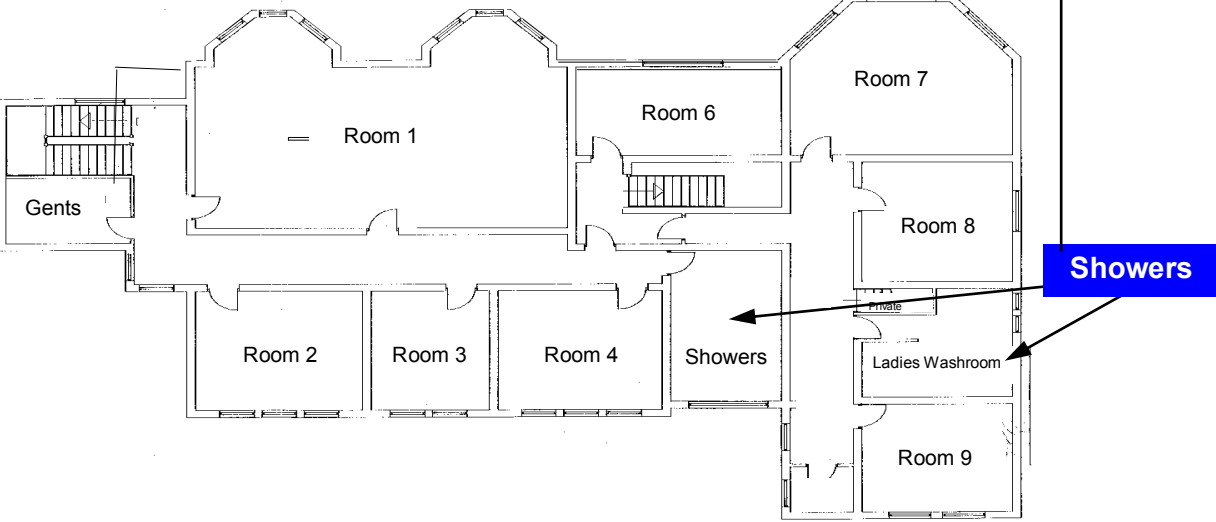
**Please recycle plastic, glass, tins and paper**

**Please conserve water**

### Hostel Ground Floor Plan



### Hostel First Floor Plan



Please return this sheet on departure